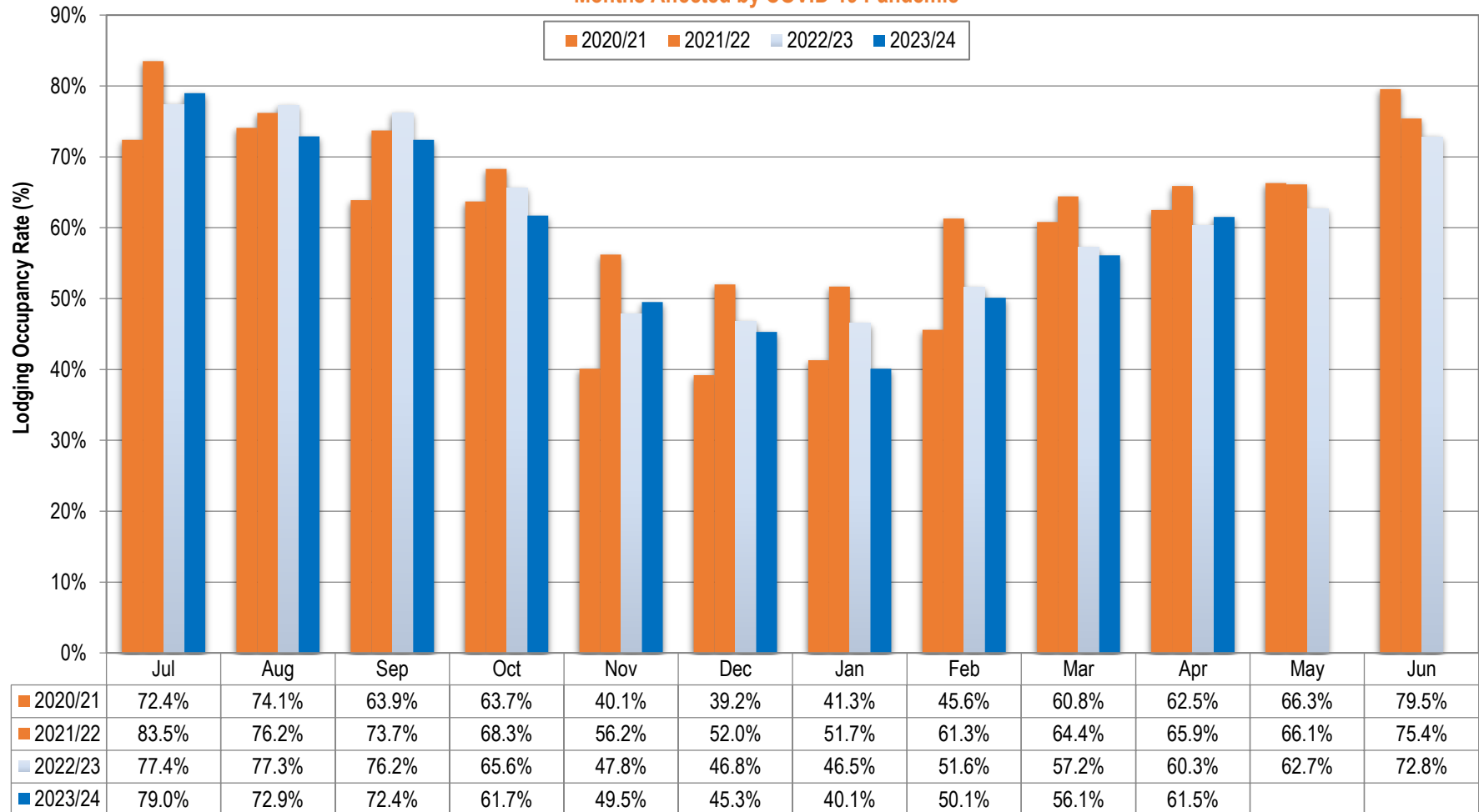


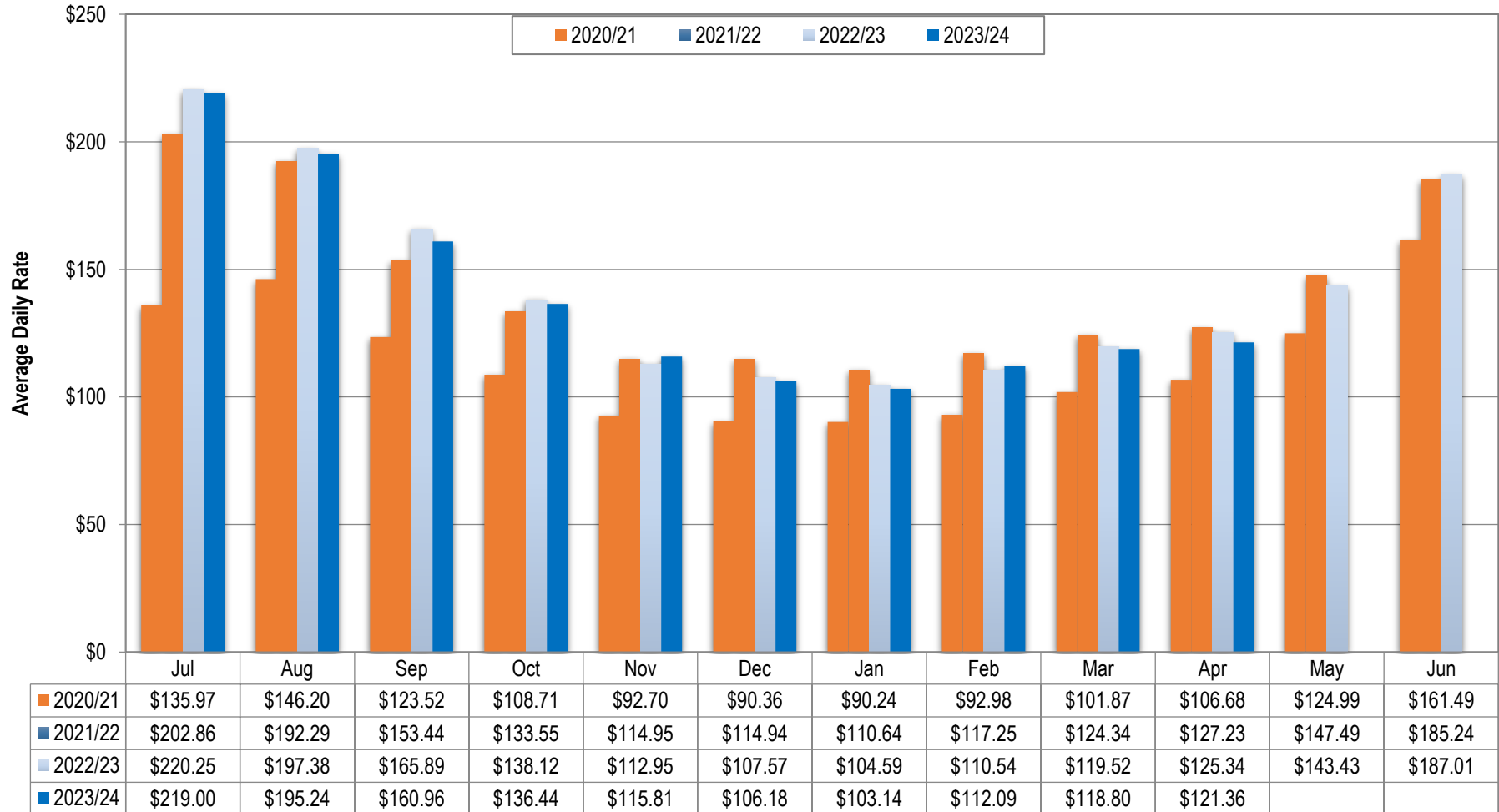
Bend Lodging Occupancy Rates

* Months Affected by COVID-19 Pandemic



Bend Lodging Average Daily Rates

* Months Affected by COVID-19 Pandemic



Hotel Industry Occupancy Report (STR)

* Months Affected by COVID-19 Pandemic

Occupancy (%)		Jul	Aug	Sep	Oct	Nov	Dec	Jan	Feb	Mar	Apr	May	Jun	FY total
2021	2020/21	72.4%	74.1%	63.9%	63.7%	40.1%	39.2%	41.3%	45.6%	60.8%	62.5%	66.3%	79.5%	59.1%
2022	2021/22	83.5%	76.2%	73.7%	68.3%	56.2%	52.0%	51.7%	61.3%	64.4%	65.9%	66.1%	75.4%	66.2%
2023	2022/23	77.4%	77.3%	76.2%	65.6%	47.8%	46.8%	46.5%	51.6%	57.2%	60.3%	62.7%	72.8%	61.9%
2024	2023/24	79.0%	72.9%	72.4%	61.7%	49.5%	45.3%	40.1%	50.1%	56.1%	61.5%			58.9%
		2.1%	-5.7%	-5.0%	-5.9%	3.6%	-3.2%	-13.8%	-2.9%	-1.9%	2.0%	-100.0%	-100.0%	
ADR (\$)		Jul	Aug	Sep	Oct	Nov	Dec	Jan	Feb	Mar	Apr	May	Jun	FY total
2021	2020/21	\$135.97	\$146.20	\$123.52	\$108.71	\$92.70	\$90.36	\$90.24	\$92.98	\$101.87	\$106.68	\$124.99	\$161.49	\$114.64
2022	2021/22	\$202.86	\$192.29	\$153.44	\$133.55	\$114.95	\$114.94	\$110.64	\$117.25	\$124.34	\$127.23	\$147.49	\$185.24	\$143.69
2023	2022/23	\$220.25	\$197.38	\$165.89	\$138.12	\$112.95	\$107.57	\$104.59	\$110.54	\$119.52	\$125.34	\$143.43	\$187.01	\$144.38
2024	2023/24	\$219.00	\$195.24	\$160.96	\$136.44	\$115.81	\$106.18	\$103.14	\$112.09	\$118.80	\$121.36			\$138.90
		-0.6%	-1.1%	-3.0%	-1.2%	2.5%	-1.3%	-1.4%	1.4%	-0.6%	-3.2%	-100.0%	-100.0%	