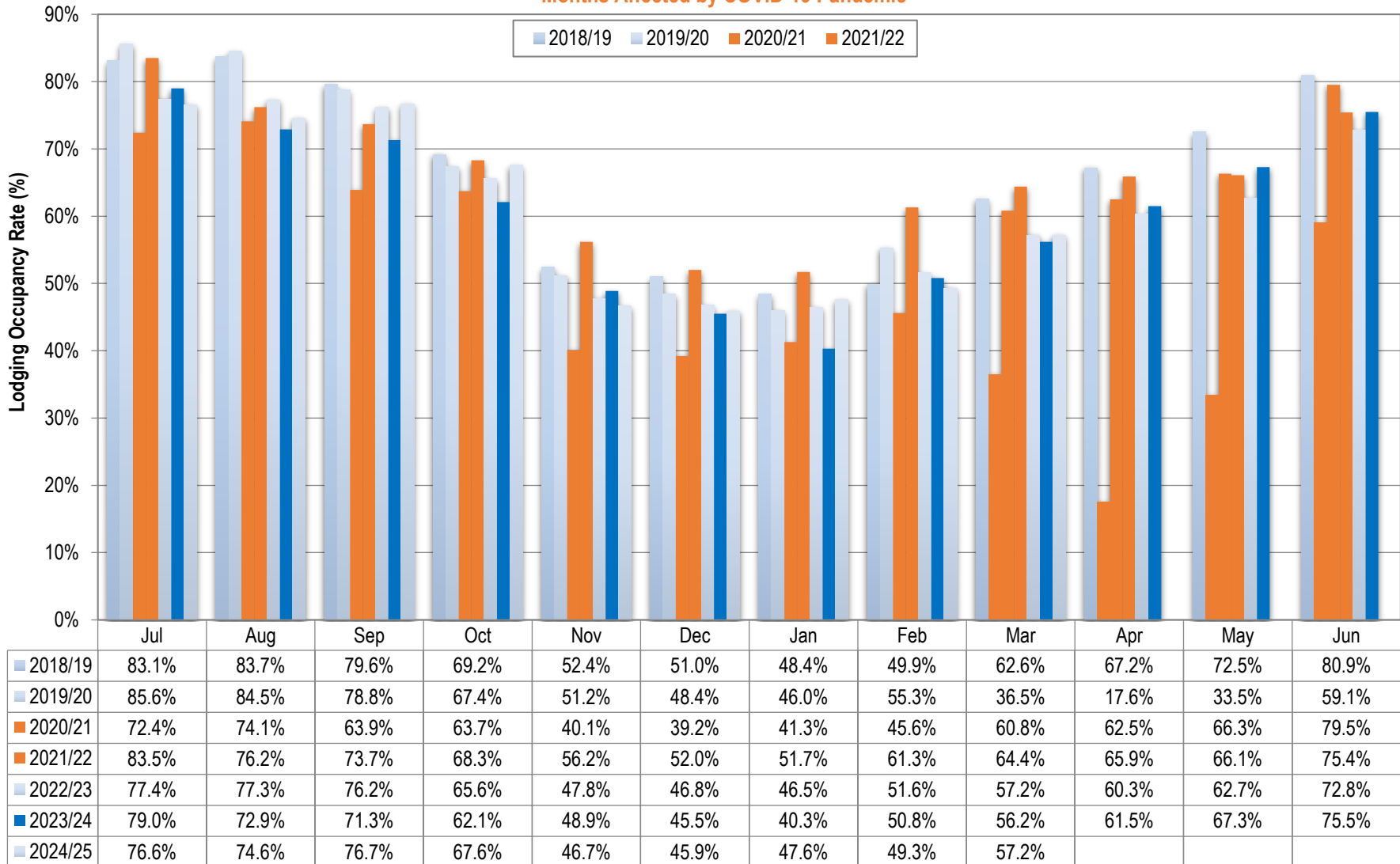


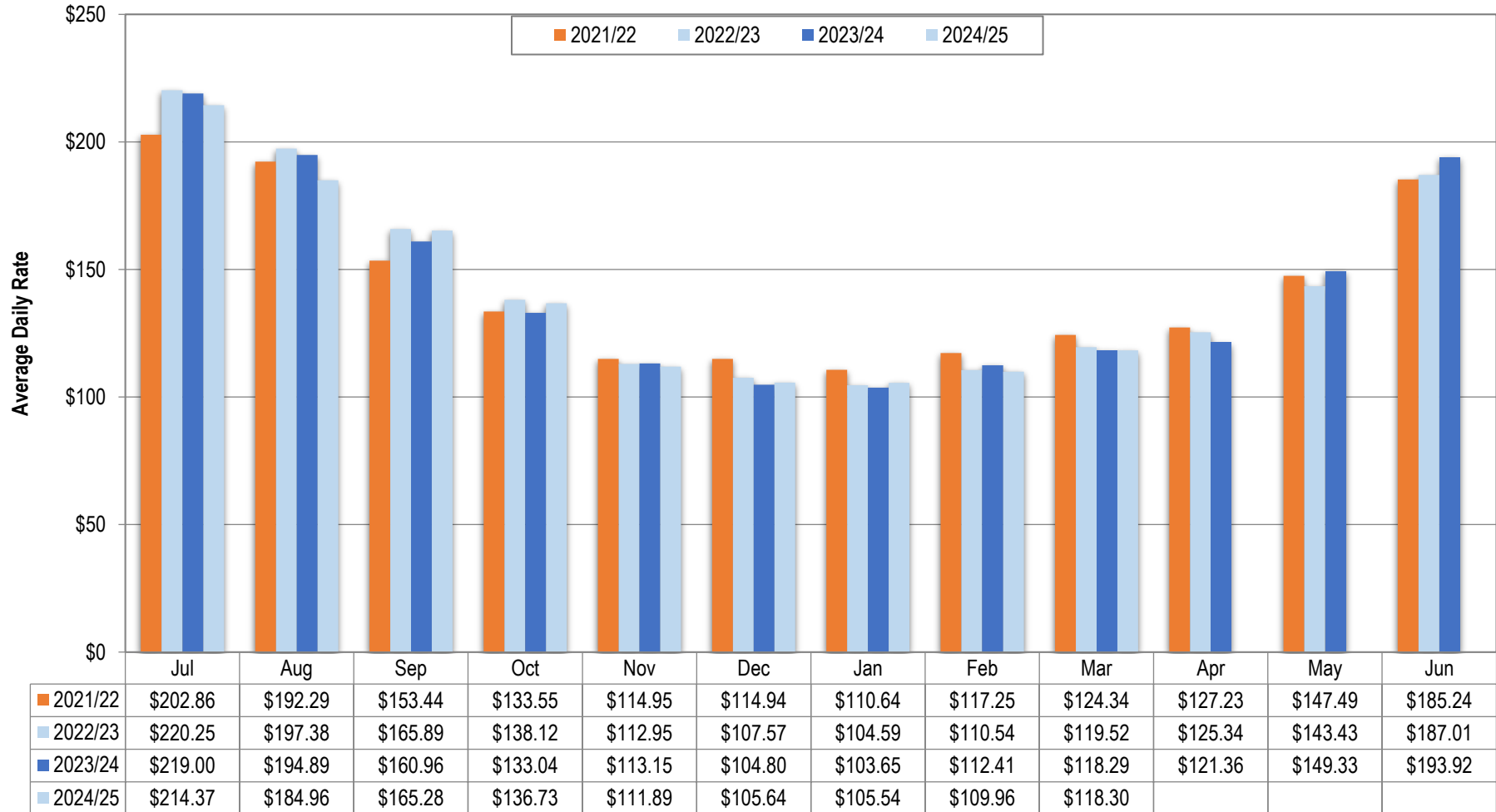
# Bend Lodging Occupancy Rates

\* Months Affected by COVID-19 Pandemic



# Bend Lodging Average Daily Rates

\* Months Affected by COVID-19 Pandemic



## Hotel Industry Occupancy Report (STR)

\* Months Affected by COVID-19 Pandemic

Occupancy (%)		Jul	Aug	Sep	Oct	Nov	Dec	Jan	Feb	Mar	Apr	May	Jun	FY average
2019	2018/19	83.1%	83.7%	79.6%	69.2%	52.4%	51.0%	48.4%	49.9%	62.6%	67.2%	72.5%	80.9%	66.8%
2020	2019/20	85.6%	84.5%	78.8%	67.4%	51.2%	48.4%	46.0%	55.3%	36.5%	17.6%	33.5%	59.1%	55.3%
2021	2020/21	72.4%	74.1%	63.9%	63.7%	40.1%	39.2%	41.3%	45.6%	60.8%	62.5%	66.3%	79.5%	59.1%
2022	2021/22	83.5%	76.2%	73.7%	68.3%	56.2%	52.0%	51.7%	61.3%	64.4%	65.9%	66.1%	75.4%	66.2%
2023	2022/23	77.4%	77.3%	76.2%	65.6%	47.8%	46.8%	46.5%	51.6%	57.2%	60.3%	62.7%	72.8%	61.9%
2024	2023/24	79.0%	72.9%	71.3%	62.1%	48.9%	45.5%	40.3%	50.8%	56.2%	61.5%	67.3%	75.5%	60.9%
2025	2024/25	76.6%	74.6%	76.7%	67.6%	46.7%	45.9%	47.6%	49.3%	57.2%				60.2%
		-3.0%	2.3%	7.6%	8.9%	-4.5%	0.9%	18.1%	-3.0%	1.8%	-100.0%	-100.0%	-100.0%	
ADR (\$)		Jul	Aug	Sep	Oct	Nov	Dec	Jan	Feb	Mar	Apr	May	Jun	FY average
2019	2018/19	\$171.93	\$167.59	\$130.09	\$115.28	\$100.65	\$99.66	\$100.16	\$104.50	\$111.28	\$112.96	\$126.67	\$150.08	\$128.52
2020	2019/20	\$172.30	\$167.80	\$130.79	\$117.55	\$103.17	\$102.88	\$99.21	\$104.84	\$100.85	\$80.29	\$85.17	\$109.47	\$114.53
2021	2020/21	\$135.97	\$146.20	\$123.52	\$108.71	\$92.70	\$90.36	\$90.24	\$92.98	\$101.87	\$106.68	\$124.99	\$161.49	\$114.64
2022	2021/22	\$202.86	\$192.29	\$153.44	\$133.55	\$114.95	\$114.94	\$110.64	\$117.25	\$124.34	\$127.23	\$147.49	\$185.24	\$143.69
2023	2022/23	\$220.25	\$197.38	\$165.89	\$138.12	\$112.95	\$107.57	\$104.59	\$110.54	\$119.52	\$125.34	\$143.43	\$187.01	\$144.38
2024	2023/24	\$219.00	\$194.89	\$160.96	\$133.04	\$113.15	\$104.80	\$103.65	\$112.41	\$118.29	\$121.36	\$149.33	\$193.92	\$143.73
2025	2024/25	\$214.37	\$184.96	\$165.28	\$136.73	\$111.89	\$105.64	\$105.54	\$109.96	\$118.30				\$139.19
		-2.1%	-5.1%	2.7%	2.8%	-1.1%	0.8%	1.8%	-2.2%	0.0%	-100.0%	-100.0%	-100.0%	